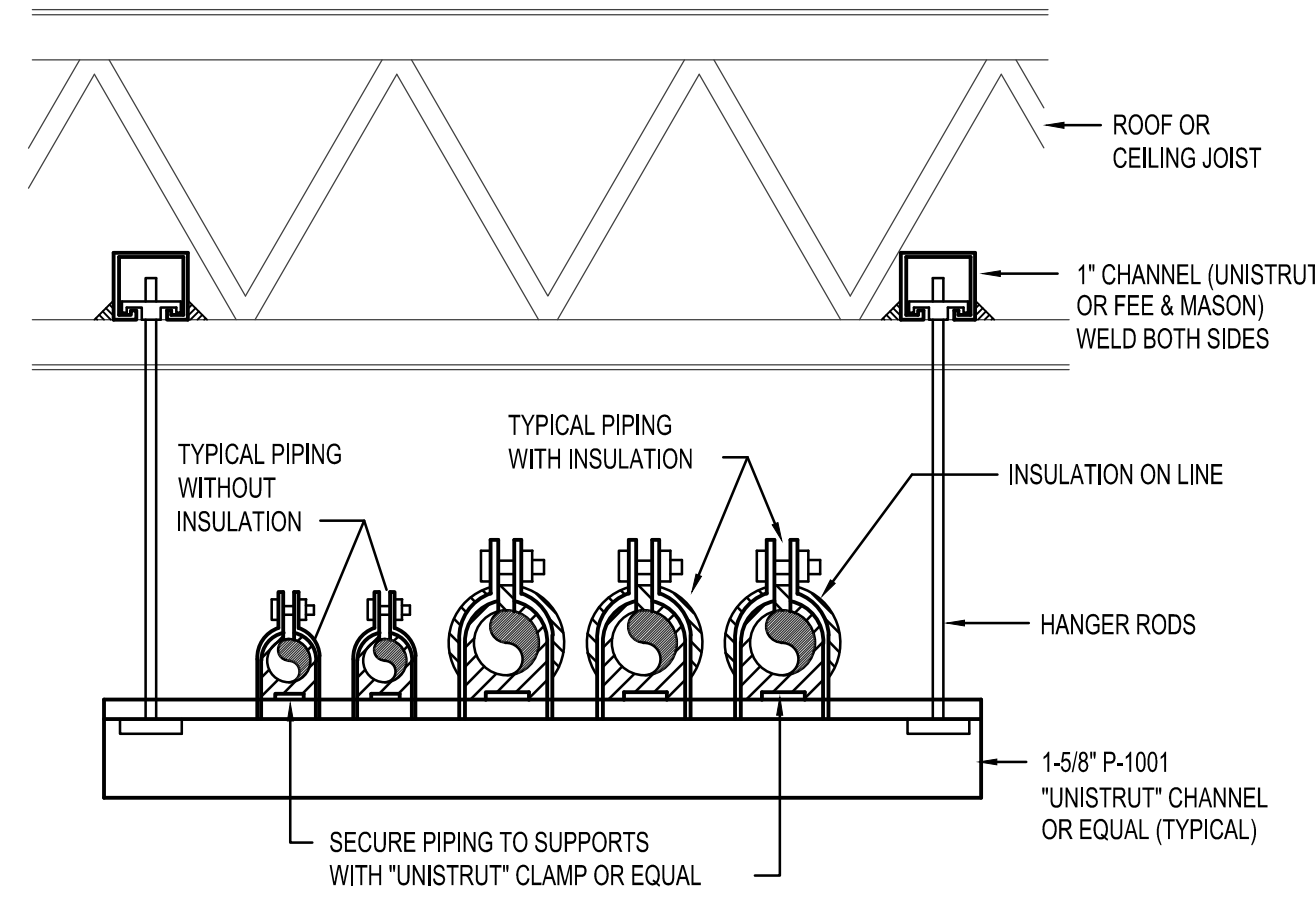


NOTE:
ALL PIPING SUPPORTS ARE TO BE INSTALLED PRIOR TO FIRE-PROOFING OF JOISTS. NO PIPING SUPPORTS ARE TO BE ATTACHED AFTER FIRE-PROOFING HAS BEEN DONE.

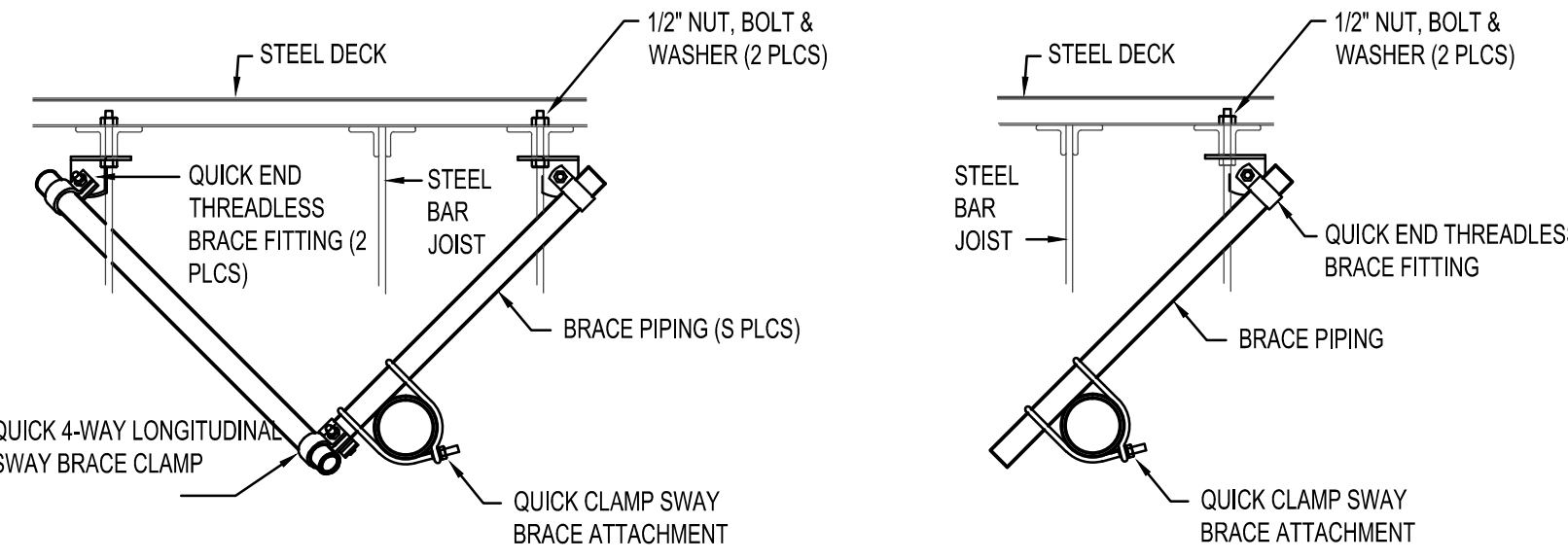
PIPE Ø	MAX. SPAN*
1"	7'-0"
1-1/2"	9'-0"
2"	10'-0"
2-1/2"	11'-0"
3"	12'-0"
4"	14'-0"
5"	16'-0"
6"	17'-0"

* MOUNT PIPE SUPPORTS AT MAXIMUM SPACING FOR THE SMALLEST PIPING INCLUDED IN SUPPORT RACK.



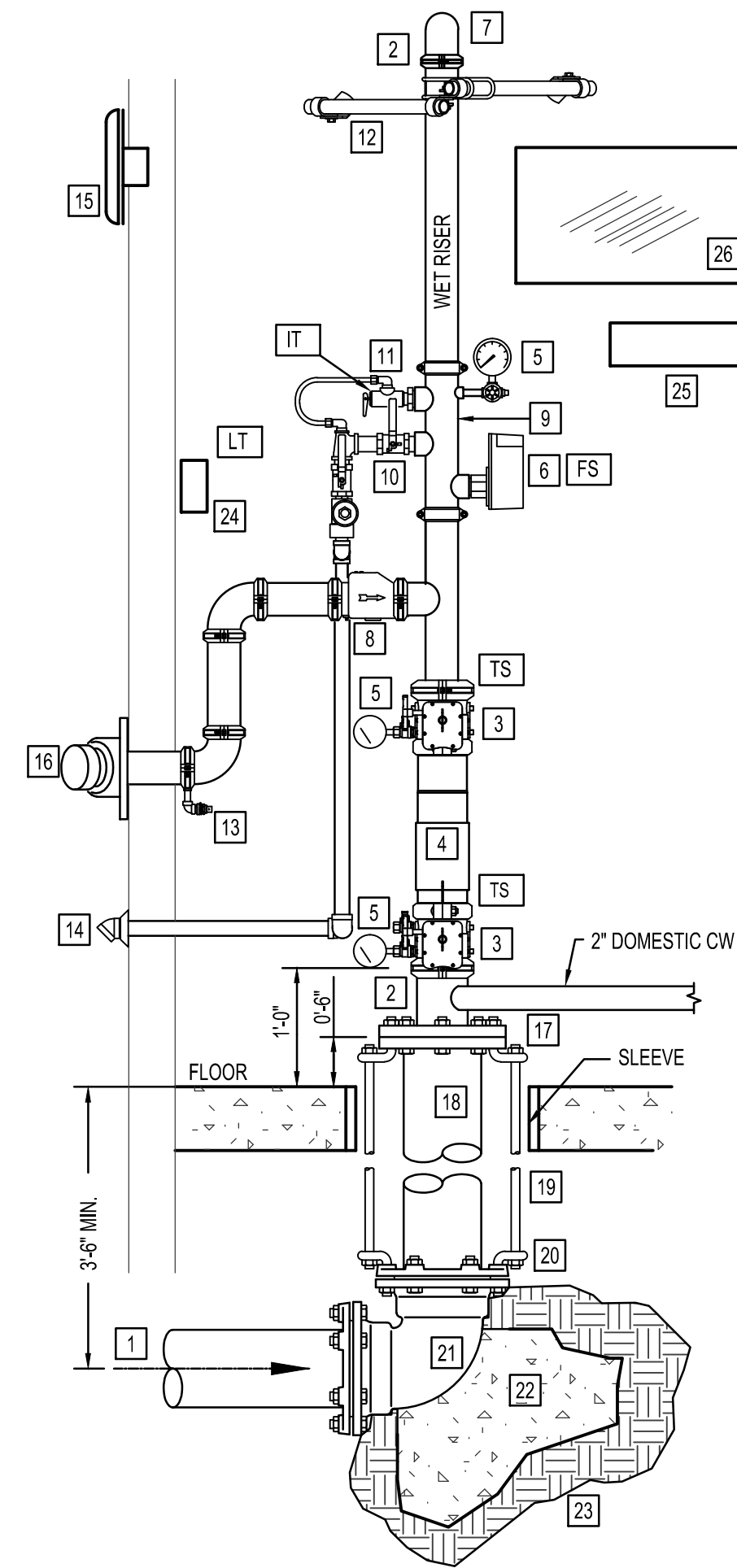
NOTE:
ALL FIRE SPRINKLER PIPING TO BE COORDINATED WITH DUCTWORK. (SEE SHEET M1.1). ADJUST SPRINKLER LINES AND HEADS AS REQUIRED TO GO AROUND DUCTWORK.

NOTE:
PROVIDE SEISMIC BRACING ONLY IN SEISMICALLY ACTIVE AREAS. BRACING SHALL CONFORM TO THE REQUIREMENTS OF NFPA 13 AND ALL STATE AND LOCAL CODES.



4-WAY SEISMIC BRACE

2-WAY SEISMIC BRACE



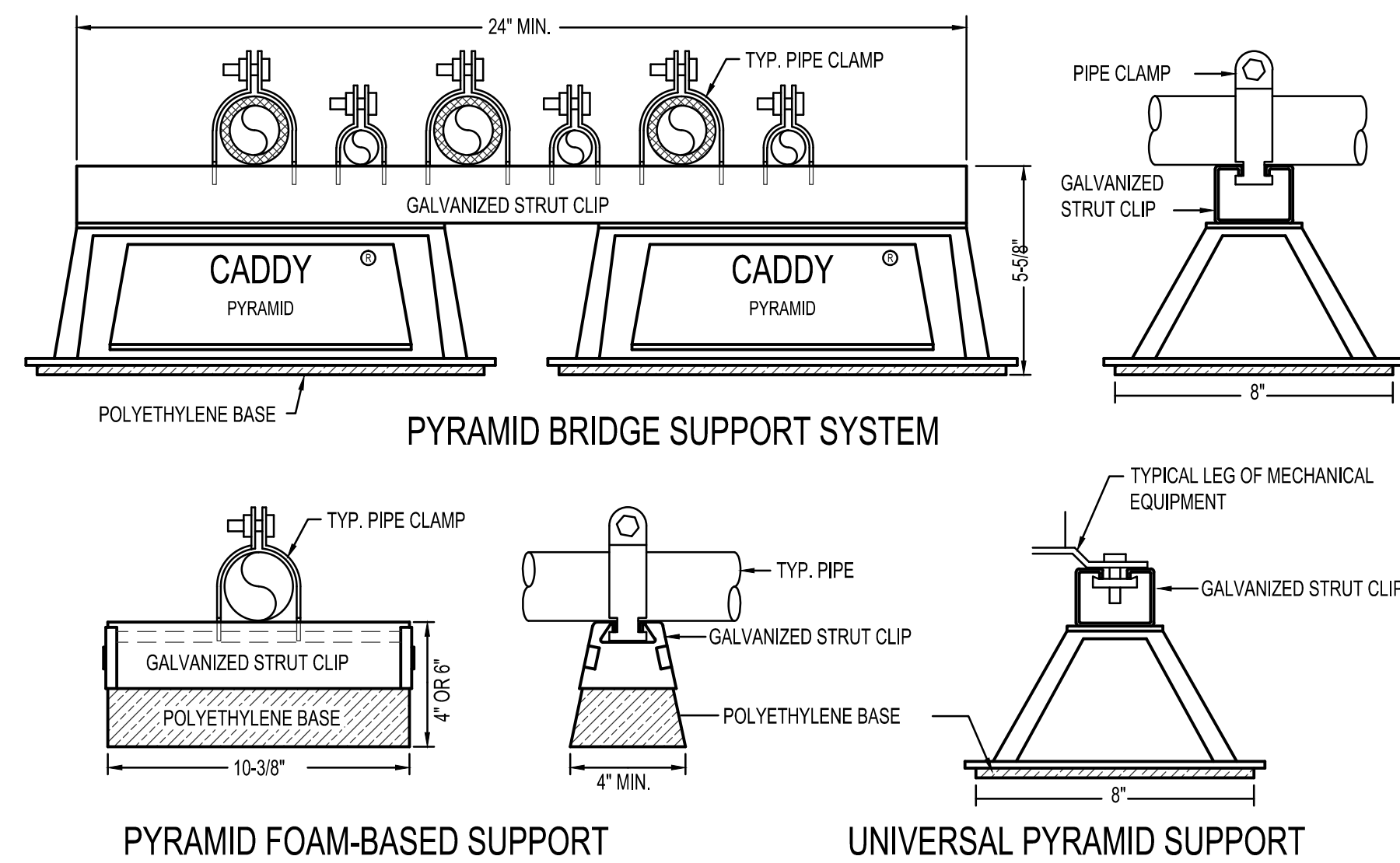
NOTE:
PROVIDE SLEEVES WHERE PIPING PENETRATES BUILDING AT FLOOR AND WALLS. SEAL AROUND PENETRATION WITH FLEXIBLE MASTIC AT FLOOR. PROVIDE 2" ANNULAR SPACE AROUND AND RESTRAIN FLANGE SPIGOT.

WET RISER DETAIL NOTES

- 1 WATER SUPPLY FROM CITY WATER MAIN. USE CLASS 53 DUCTILE IRON WHEN CROSSING UNDER BLDG FOUNDATION.
- 2 USE FLEXIBLE GROOVED PIPE COUPLING ONLY IF SEISMIC BRACING IS REQUIRED. SEE NOTE #12.
- 3 REQUIRED BUTTERFLY VALVE WITH INTEGRAL SUPERVISORY SWITCH.
- 4 DOUBLE CHECK BACKFLOW PREVENTER WITH RELATED TRIM AND GAUGES.
- 5 3-1/2" DIAMETER WATER GAUGE WITH 1/2" TEST AND ISOLATION VALVE.
- 6 VANE TYPE WATER FLOW SWITCH.
- 7 SUPPLY TO WET PIPE FIRE SPRINKLER SYSTEM.
- 8 SWING CHECK VALVE.
- 9 RISER MANIFOLD - INCLUDES PRESSURE GAUGE, FLOW SWITCH, PRESSURE RELIEF VALVE, AND TEST AND MAIN DRAIN DEVICE.
- 10 INSPECTOR'S TEST & MAIN DRAIN DEVICE [IT] - PIPE TO OUTSIDE.
- 11 PRESSURE RELIEF VALVE SHALL BE REQUIRED SET AT 175 PSI - PIPED TO DISCHARGE OUTSIDE.
- 12 SEISMIC BRACING REQUIRED IN SEISMIC DESIGN CATEGORY C, D, E, F.
- 13 1/2" AUTOMATIC BALL DRIP VALVE.
- 14 PIPE TO DRAIN OUTSIDE.
- 15 WEATHERPROOF ELECTRIC BELL OR HORN AND STROBE (OUTSIDE).
- 16 OUT TO FIRE DEPARTMENT CONNECTION WITH GALVANIZED SCH 40 PIPING - PROVIDE BALL DRIP WHEN TRAPPING PIPE. SIZE CONNECTION AS REQUIRED. NOTE: PIPE FOC TO REMOTE LOCATION ON STAKE BUILDINGS AND WHEN REQUIRED BY FIRE MARSHAL.
- 17 GALVANIZED FLANGE AND SPOOL PIECE
- 18 CLASS 53 D.I. FLANGED SPIGOT
- 19 3/4" A.T.R.
- 20 3/4" BENT EYE BOLT
- 21 MECHANICAL JOINT 90° ELL
- 22 CONCRETE THRUST BLOCK WITH 5 SQ. FEET BEARING AREA
- 23 UNDISTURBED EARTH
- 24 LOW TEMPERATURE SENSOR - MOUNTED ON WALL - THIS SWITCH IS PROVIDED UNDER DIVISION 28 OF THE SPECIFICATIONS.
- 25 SPARE HEAD CABINET WITH SPARE SPRINKLER HEADS AND WRENCHES.
- 26 LAMINATED SYSTEM MAP WITH SYSTEM START-UP AND SHUT-DOWN INSTRUCTIONS.

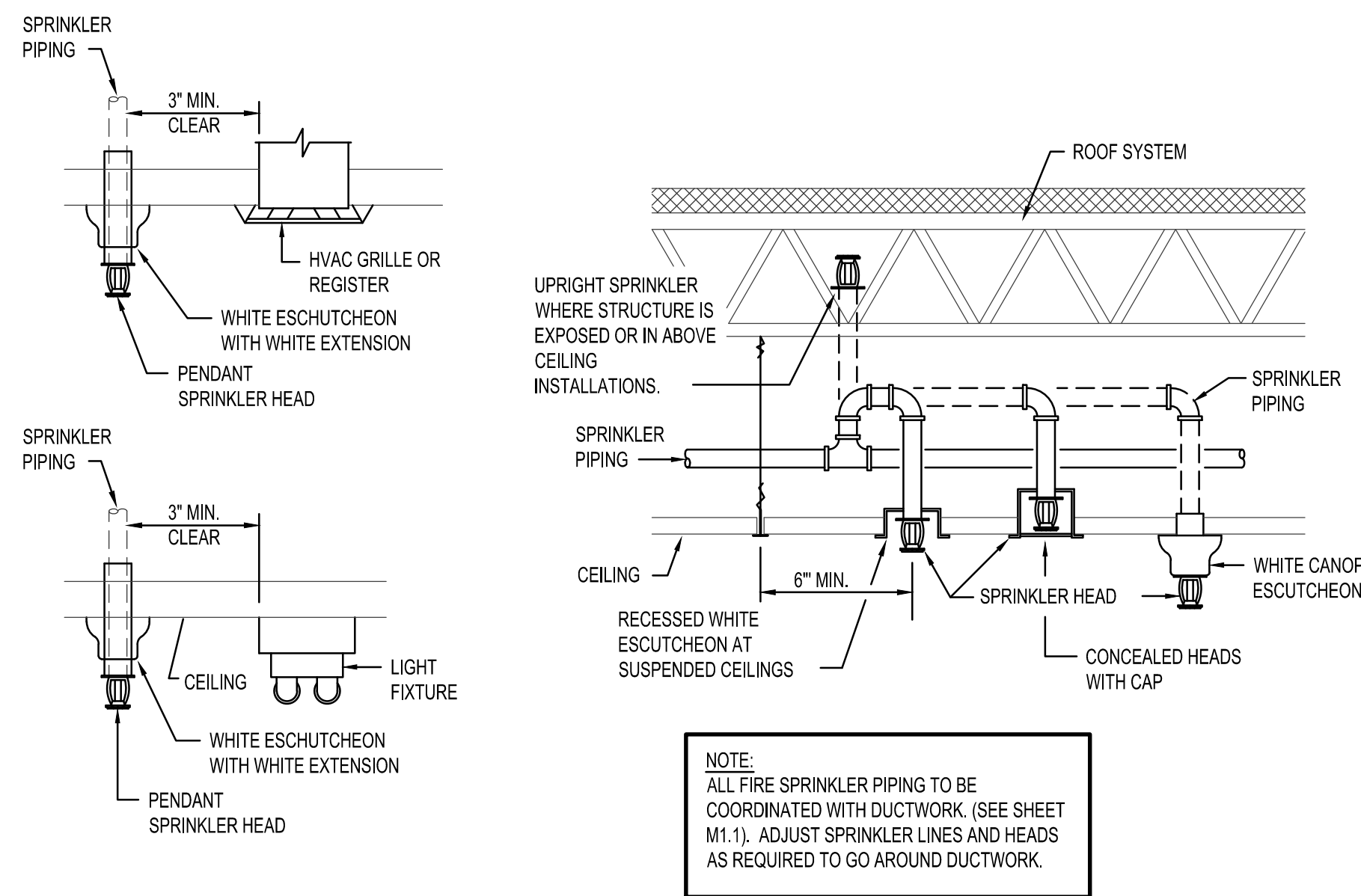
A PIPE SUPPORT DETAIL

NO SCALE



B SEISMIC BRACING DETAILS

NO SCALE



NOTE:
ALL FIRE SPRINKLER PIPING TO BE COORDINATED WITH DUCTWORK. (SEE SHEET M1.1). ADJUST SPRINKLER LINES AND HEADS AS REQUIRED TO GO AROUND DUCTWORK.

D ROOF TOP EQUIPMENT AND PIPING SUPPORT DETAILS

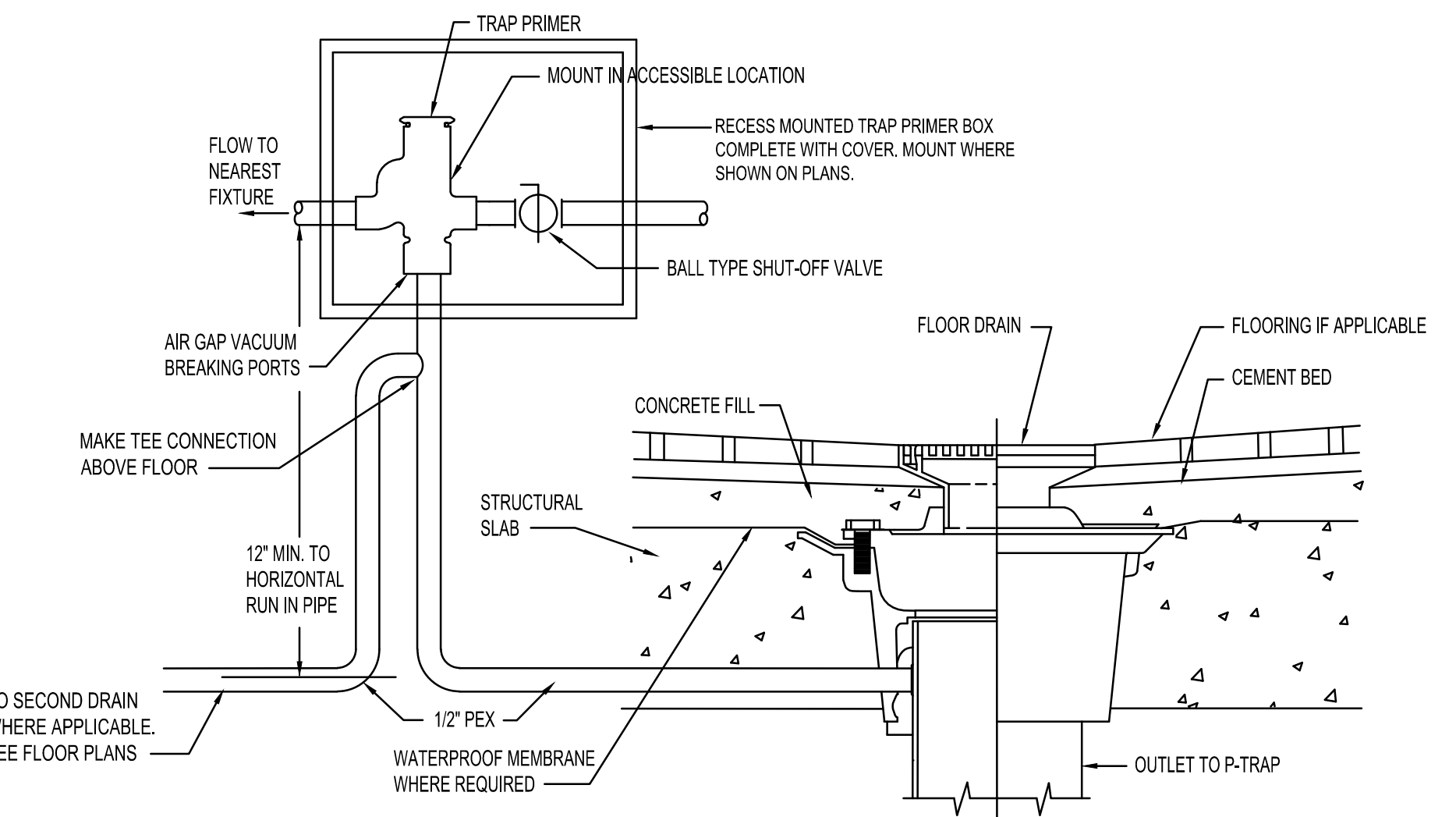
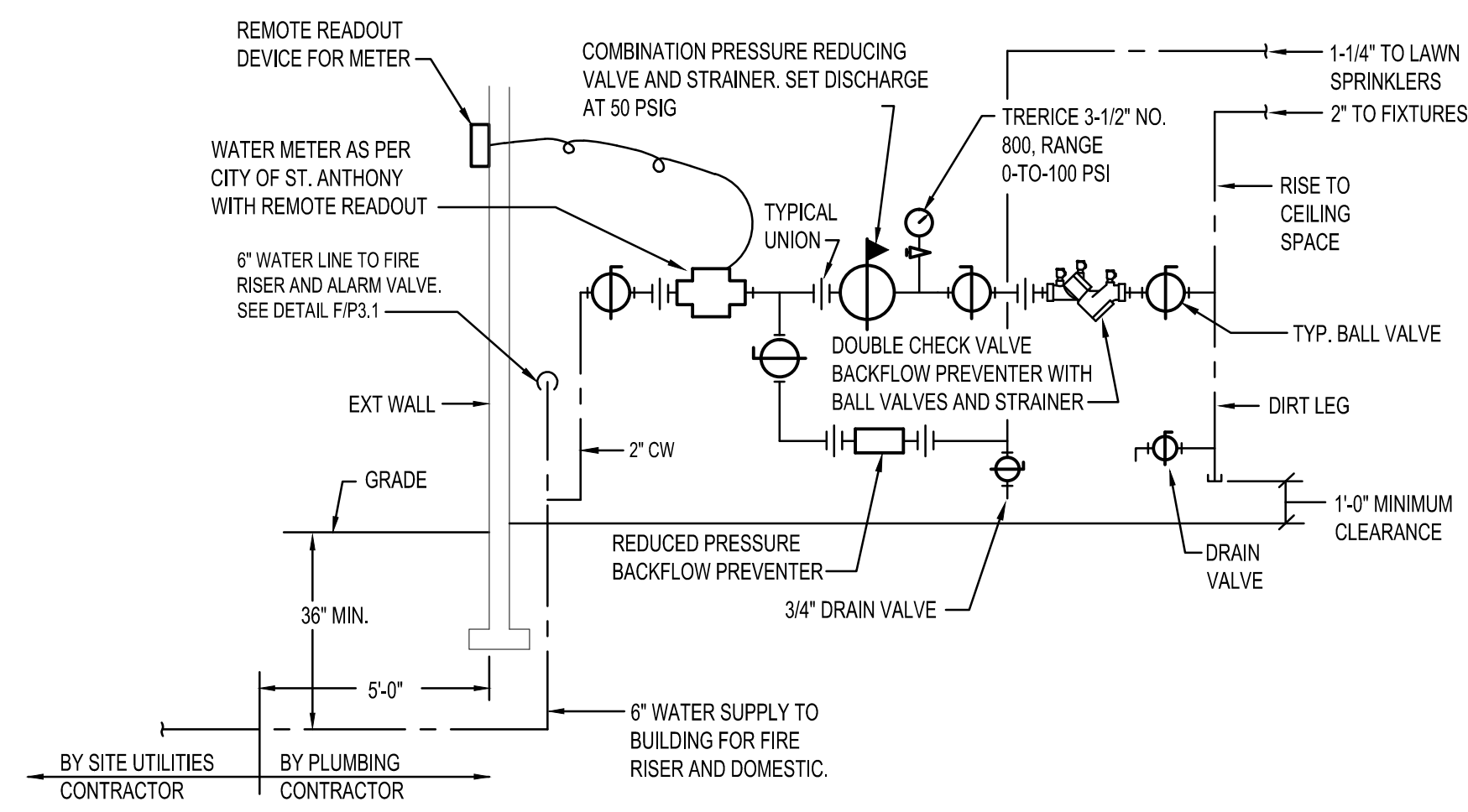
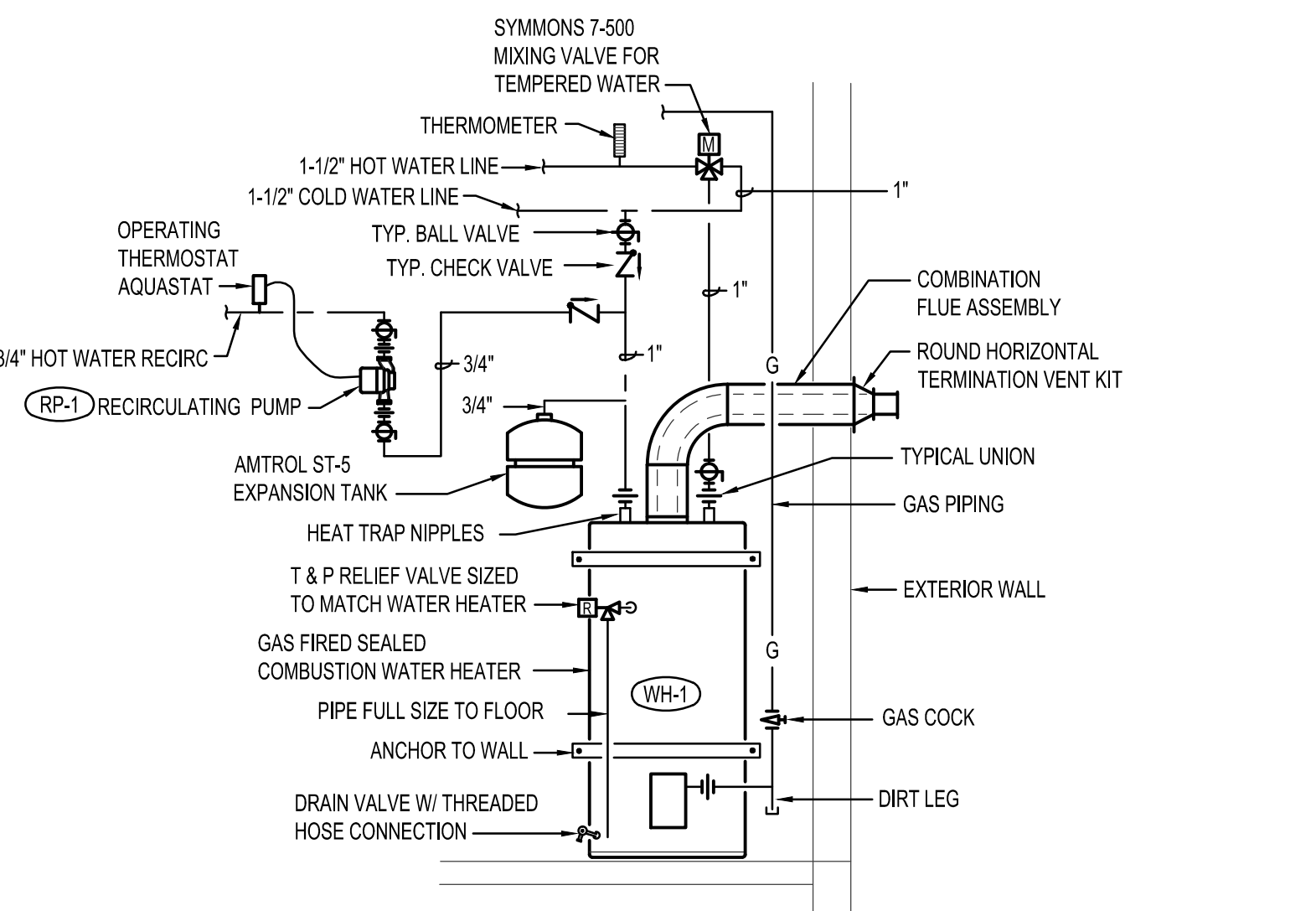
NO SCALE

E SPRINKLER HEAD COORDINATION DETAILS

NO SCALE

F VERTICAL FIRE RISER DETAIL

NO SCALE



K GAS FIRED WATER HEATER PIPING DIAGRAM

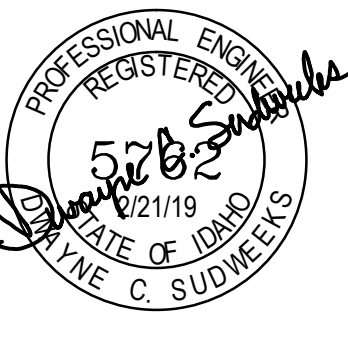
NO SCALE

L WATER PRESSURE REDUCING STATION DETAIL

NO SCALE

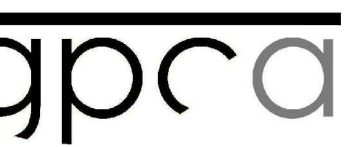
M TRAP PRIMER INSTALLATION DETAIL

NO SCALE



Ownership & Use of Documents
Drawings and specifications, as instruments of professional service are and shall remain the property of the architect. These documents are not to be used in whole or in part for any project or purpose whatsoever, without the prior specific written authorization of GPC Architects PLLC.

Engineered Systems Associates
ESA JOB NUMBER 19017



no.	description	date

project: 1804
date: 06/06/2019

PLUMBING DETAILS

sheet: